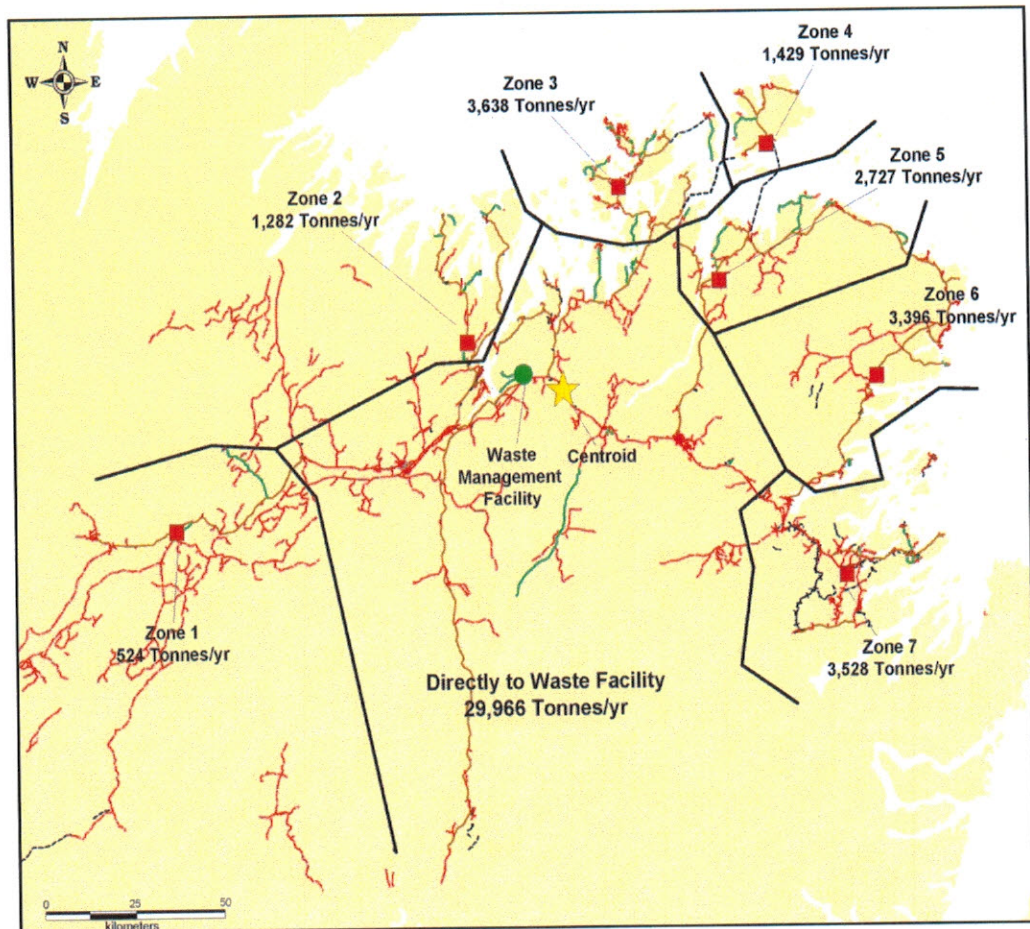


# Central Regional Service Board 2021 Annual Report



**Prepared By:** Edward Evans  
CAO - CRSB

**Date:** June 30<sup>th</sup>, 2022



**Central Newfoundland Waste Management**

P. O. Box 254, Norris Arm, NL, A0G 3M0

Phone: 709 653 2900

Fax :709 653 2920

Web: [www.cnwmc.com](http://www.cnwmc.com) E-mail: [Info@cnwmc.com](mailto:Info@cnwmc.com)

---

**Hon. Krista Lynn Howell**  
**Minister, Dept. of Municipal and Provincial Affairs**  
**PO Box 8700**  
**St. John's, NL**  
**A1B 4J6**

**Dear Minister Howell,**

On behalf of the Board of Directors of the Central Regional Service board, I am pleased to present the 2021 Annual Report as required under the Provincial Regional Service Boards Act 2012. (Revised 2015)

This report will give an overview of the Central Regional Service Board and its contribution to the Provincial Waste Management Strategy. It will identify its business units, staffing levels, expansion of operations in 2021 and future plans.

Attached you will also find a copy of CRSB 2021 Financial Statements.

Should you have any questions or concerns, please feel free to contact our CRSB office.

Sincerely,

**Robert Elliott**  
**Chairperson, CRSB**

# Table of Contents

Central Regional Service Board (CRSB) and Central Newfoundland Waste Management (CNWM)- Board & Boundaries.	4
CRSB 2016 Board Members	5
The Regional Waste Management Site	6-13
CRSB Business Units	14
CRSB Curb Side Collection Program	18
CRSB Water/Waste Water Pilot Project	19
Future Plans of CRSB	20
Appendices	21



1. The Central Regional Service Board (the Board) was established in 2008 and is governed under the Provincial *Regional Service Boards Act* 2012 (revised 2019). The Board's power includes the construction and operation of the Regional Solid Waste disposal site and seven local Waste Management Facilities. It is empowered to set and charge user fees to municipal authorities, local service districts, unincorporated areas, benefited by a regional facility and other entities as required.
2. Prior to 2008, the entity operated as Central Newfoundland Waste Management (CNWM). It continues to operate under the marketing name of CNWM, as it identifies the service we provide and is recognized by the communities and customers we serve in the central region. All legal documents are signed under the name of Central Regional Service Board.

Central Regional Service Board boundaries, as established under the Regional Service Board Act 2012, revised 2019, are from Terra Nova National Park (park included) in the East, Buchans in the West and Fogo Island/Twillingate in the North.

## Board Boundaries

### Regional Site

Route 3-1-09

Norris Arm North Access Road

Ward 1 -Buchans Area

Ward 2 -Point Leamington Area

Ward 3 -New World Island/Twillingate

Ward 4 -Fogo Island

Ward 5 -Gander Bay

Ward 6 -Indian Bay

Ward 7 -Terra Nova

Ward 8 -Gander

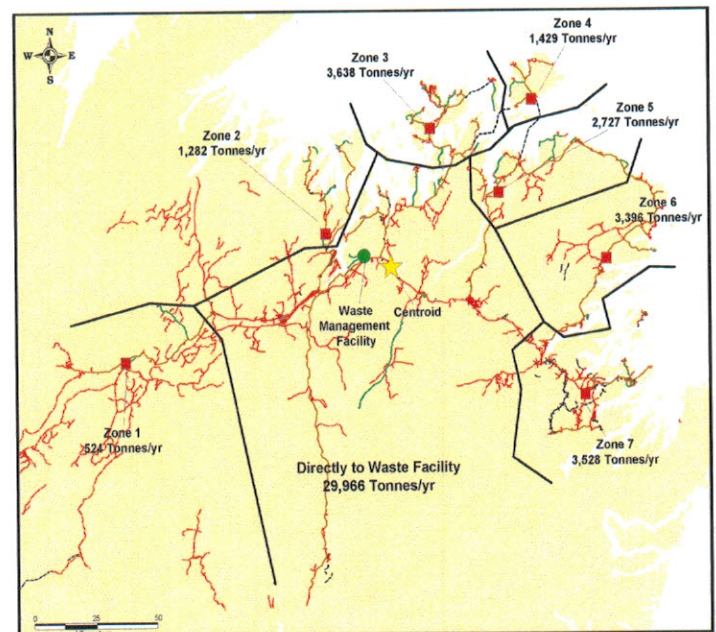
Ward 9 – Grand Falls Windsor

Ward 10-Bishops Falls, Botwood & Lewisporte

Ward 11-Norris Arm North & South

Ward 12-Direct Haul

The total population served by CRSB is approximately 32,200 households with 72,500 residents and approximately 3,000 businesses



The Central Regional Service Board's Office is located at the Regional Site, Route 3-01-09 Norris Arm North Access Road. Staffing levels have reached forth two (42) full time employees; six (6) at the Administration Building, fifteen (15) at the Regional Site, seven (7) at the Local Waste Management Sites, nine (9) Collection Drivers, and five (5) part time/call-ins.

Contact information: Phone: 709 653-2900; Fax: 709 653-2920; Email: info@cnwmc.com

The Board shall meet no fewer than 6 times a year for the disposition of general business. Special board meetings may be called by the Chairperson, or on the written request of four members.

3. The Board's Governance Model delineates the number of members and representation of towns and zones within the board's geographic boundaries. As per the Governance Model a full board includes, twelve Board members (Chair included).

**(Appendix A – Governance Model). Revised January 2017. (Under review)**

The 2021 Board members are as follows: **(January 1<sup>st</sup> – Sept 26<sup>th</sup> 2021)**

Name	Ward Represented
Mr. Gary Noffel	Buchan's Junction (Ward 1)
Mr. Robert Elliott, Chairperson	Point Leamington (Ward 2)
Mr. Kevin Butt	New World Island/Twillington (Ward 3)
Mr. Wayne Collins	Fogo Island (Ward 4)
Mr. Keith Howell	Gander Bay (Ward 5)
Mr. Lloyd Pickett	New-Wes-Valley/Indian Bay (Ward 6)
Mr. Glenn Arnold – Vice Chair	Terra Nova Area (Ward 7)
Mr. Percy Farwell - Secretary	Gander (Ward 8)
Mr. Rod Bennett	Grand Falls Windsor (Ward 9)
Mr. Derrick White	Bishops Falls/Botwood/Lewisporte (Ward 10)
Mr. Ross Rowsell	Norris Arm North & South (Ward 11)
Mr. Derrick Luff - Treasurer	Centroid (Ward 12)



The Board oversees the continued construction and operation of the Central Regional Site at Norris Arm North access road and 7 local waste management facilities (transfer stations). As well, the Board continues through its Management Staff to monitor the day-to-day operations of these sites.

#### **4.0 The Regional Waste Management Site includes the following facilities:**

##### **4.1 Administration Building**



The Administration building has a staff of six to oversee the Central Regional Waste Management System. As well as an office to accommodate the water/waste water pilot project specialist. The building also includes a training room which can accommodate school tours or groups that request a tour of the Regional Waste Management Facility.

## 4.2 Scale House and Scale



The Scale House controls the inbound and outbound flow of customers. The scale system requires radio frequency identification cards (RFID) which is attached to a fully automatic accounting system. This system identifies the customer, the product being delivered, the weight (tonnage) in and out, and provides the customer with a weigh bill to their accounting system / cell phone on exiting the site.

### 4.3 Public Drop Off Area

Public Drop Off Area allows customers to bring their waste and sort it at the appropriate drop off bins. The Public Drop Off also houses an electronic waste centre, paint waste, metals, tires, oils and oil products, and a residential hazardous waste area. This site is operational 6 days a week. (Monday – Saturday).



### E-Waste





**Metal Laydown Area**



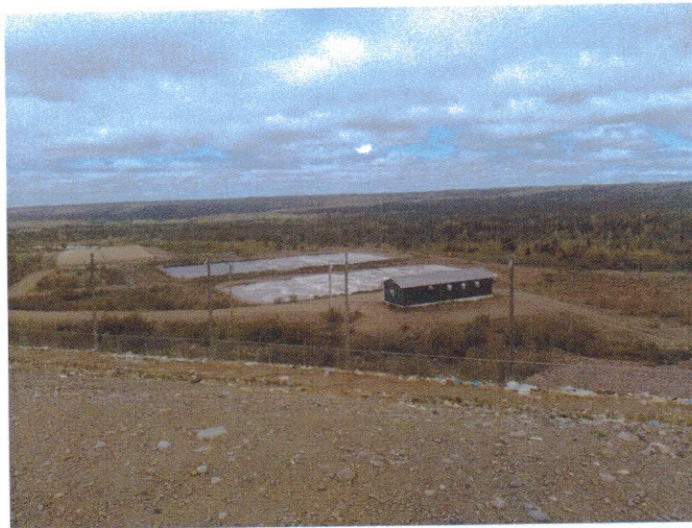
**Product Care Paint Waste Storage**



**4.4 2nd Generation Engineered Lined Landfill with Full Leachate Protection. (we presently house cell 1, 2, and 3)**



**4.5 Leachate Control Building, Lagoons, and Engineered Wetland.**



This is the only 2<sup>nd</sup> generation lined landfill with full leachate treatment control in the province. The system has liners in the ground which collects all leachate and directs it to a leachate treatment process. Leachate monitoring tests are reported to the province monthly.



#### 4.6 Maintenance Garage.



CRSB does the majority of its maintenance on its fleet of trucks and heavy equipment at this site.

#### 4.7 Construction /Demolition Laydown Area and Burial Site.



Materials that are identified in the “Certificate of Approval” (COA) by the Dept. of Environment and Climate Change as inert (causing no damage to our environment) are permitted to be lodged in the Construction and Demolition (C & D) laydown area. Materials that have future uses are kept for processing or sale. The materials that have no future uses can be buried in the C & D landfill site. Materials such as shingles, non – program tires (MMSB), gyprock etc. will be buried in the C & D burial site.

Adjacent to the C & D site is an approved burial site for asbestos waste.



#### 4.8 The Material Recovery Facility (MRF).



The Material Recovery Facility went into operation in March, 2015. Its operating under a contract with Herbert's Recycling Inc. and process in excess of 3636 tons of recyclables in 2021.

#### 4.9 Typical Transfer Station



The seven (7) Transfer Stations provide a similar level of service as the Regional Waste Management Site to its sub-regions within the Central Region. The locations selected included the fact that no community had more than 100 km or one-hour drive to dispose of its waste, and that no matter where you lived, everyone pays the same fees for services

**List of Transfer Stations:**

- Ward 1. Buchans Junction
- Ward 2. Point Leamington
- Ward 3. Gander Bay
- Ward 4. NWI/Twillingate
- Ward 5. Fogo Island
- Ward 6. Indian Bay
- Ward 7. Terra Nova

## 5. Business Units

### 5.1 Waste Disposal

In 2021, CRSB handled **72,053** tonnes of waste at the Regional Site and seven (7) Transfer Station Sites. Below is a list of product types & tonnage for each of the waste streams.

Types and Quantities of Waste Received in 2020:

1. Clear Garbage Bags.....Central.....	22,867 Tonne
2. Clear Garbage Bags ..(Western including C & D).....	29,282 Tonne
3. Transparent Blue Bags.....	2,172 Tonne
4. Construction/Demolition/Bulk (Sorted).....	8,663 Tonne
5. Construction/Demolition/Bulk (Mixed).....	6,318 Tonne
6. Metals .....	867 Tonne
7. Cardboard.....	1,441 Tonne
8. Household Hazardous Waste (HHW).....	21 Tonne
9. E-Waste.....	49 Tonne
10. Tires.....Non Program Tires.....	81 Tonne
11. Paint Waste.....	30 Tonne
12. Abestos.....	256 Tonne
13. International Waste.....	6 Tonne
<b>Total Tonnage.....</b>	<b>72,053 Tonne</b>

### 5.2 New five Year (5) Landfill Cell (cell #3)

In 2021, Central Regional Service Board, with the assistance of the Dept. of Environment, and Climate Change, constructed a 3rd lined landfill attached to the existing cell for continued leachate treatment. Since January 2021 this new cell disposed of waste form both Central & Western Regional Service Boards.



( Cell #3 under construction)



### 5.3 Material Recovery Facility Operation

The material recovery facility (MRF) began operations in the Spring/Summer 2015.

The table below outlines the total tonnage per year for both blue bag recyclables (tonnage at the curbside) and cardboard. (Mostly commercial).

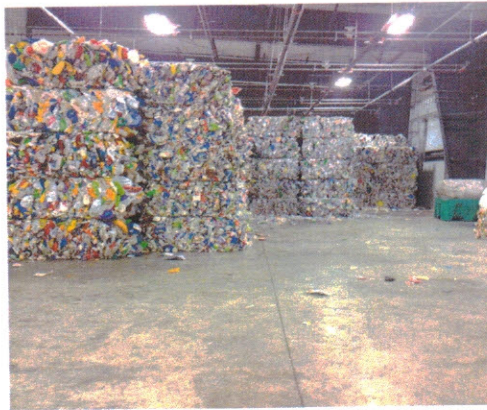
Year	Blue Bag	Cardboard	Total Tonnage
2016	2826	1370	4191
2017	2662	1169	3831
2018	3422	1197	4619
2019	2965	1409	4374
2020	2184	1415	3600
2021	2174	1441	3615

**Note #1** In 2018, Western Waste Management delivered 832 tonnes of Blue Bag to Central for processing.

**Note #2** In 2019, Western Waste Management delivered 449 tonnes of Blue Bag to Central for processing.

**Note #3** In 2020, Covid – 19 had a major impact on MRF operations.





In the past 4 years CNWM (through Hebert's Recycling Inc.) recorded the following total production reports (tonne).

		2018	2019	2020	2021
1.	Cardboard	1333.63	1573.09	1489.81	166.09
2.	Mixed Paper	1471.67	1313.91	798.84	862.73
3.	PET (small plastics)	134.38	127.05	94.90	104.58
4.	HDPE (large plastics)	94.69	86.28	55.31	64.53
5.	Mixed Tubs/Lids	45.93	33.98	24.56	26.15
6.	Aluminum	33.59	32.09	24.56	32.62
7.	Tin	239.39	210.74	133.45	141.98
8.	Poly C Milk/Tetra Packaging	86.99	71.45	51.98	56.98
	<b>Total shipped</b>	<b>3440.27</b>	<b>3448.59</b>	<b>2673.20</b>	<b>2956.64</b>

**Note:** Covid – 19 had an impact on the recycling volume shipped in 2020.

What happens to the recycled materials from the MRF?

1. **Cardboard:** Sent to paper mills and into repulper. A fiber mat is created. Used to make new cardboard boxes, cereal boxes, gift boxes, tubes & core board for paper towels etc.
2. **Mixed Paper:** Sent to a paper mill, the recovered fiber is refined and cleaned. Used to make recycled paper, covers for hard cover books, game boards and cereal boxes etc.
3. **PLASTIC- Polyethylene Terephthalate (PET):**  
Sent to Canadian Companies to be flaked and rolled into sheets of plastic. Used for organic egg cartons, take out containers & cartons.
4. **PLASTIC- High Density Polyethylene- (HDPE):**  
Sent to Canadian Companies for processing, used to make drainage pipes for disposal fields.
5. **Mixed tubs and lids, same as (PET).**
6. **Aluminum:** Sent to the U.S. It is shredded, melted, and rolled into sheets, can be used to make new aluminum cans, plates, siding, etc.
7. **Tin:** Sent out through Newco Metals (NL), moved to markets in North America, used to make tin/steel products – tin cans, appliances, automobiles, rebar, pipe, etc.
8. **Poly C milk/tetra and gable:**  
Sent to National and International markets, used to make new cereal boxes, boxboard, corrugated cardboard etc.



**5.4 Curb Side Collection Program**

CRSB has fifteen (15) split stream collection trucks. The split Stream Truck allows for a single pass at curbside to collect both the blue recycling bag and clear garbage bag.

In 2021, the collection process included 62 communities/18,438 households.



### 5.5 Water/Waste Water Pilot Project

CRSB has partnered with The Department of Municipal Affairs and Environment:

1. Oversee the regular operations and maintenance of public drinking water and waste/water systems and provide recommendations for improvements.
2. Development and implementation of operational monitoring programs.

Through the Province; eleven (11) towns and eleven (11) Local Service Districts have been identified to participate in the project. These 22 communities are located in six (6) clusters in Central Newfoundland. Only four (4) now remain on boil order.

This is an 8-year pilot program ending March 31<sup>st</sup>, 2025.

### 6. Contribution to the Provincial Waste Management Strategy

In 2021, CRSB continued to contribute to the Provincial Waste Management Strategy in the diversion of waste going to the landfill. **Diversion Types and Quantities 2021**

<b>Types of Waste</b>	<b>Tonnes</b>
Blue Bag	2172
Cardboard	1441
E-Waste	49
HHW	21
Metals	867
Paint Waste	30
<b>TOTAL TONNAGE</b>	<b>4580</b>

CRSB continues to strive towards greater diversions rate. The next step will come with the introduction of composting.

## **7. Future Plans of CRSB**

### **7.1 Disposal Services WRSB**

In 2021 CRSB accepted and disposed of 29,283 tonnes of Residential and Commercial waste. Both Central and Western Regional Service Board's continue to work toward a long-term agreement for future waste management services.

### **7.2 Maintenance Garage and Wash Bay**

CRSB continues to work toward the construction of a secure maintenance garage to provide additional support to maintain and repair its 70 plus pieces of waste management equipment. With the serious issues associated with leachate, a wash bay is included in these plans.

### **7.3 Coast of Bays (COB) and Baie Verte – Green Bay Regional Service Boards**

CRSB continues to net work with the Peninsulas to move them closer to participation in the Provincial Waste Management Strategy.

### **7.4 Wood Fiber**

CRSB has proper procedures to dispose of its wood fiber challenges at the seven (7) Transfer Stations. Six sites have been cleaned up and work continues at the the Fogo Island Transfer Station. With assistance from the Province, CRSB has ordered a tractor truck with grapple and 43-foot compaction trailer to continue and improve the laydown materials at the seven (7) transfer stations. Expected delivery is fall of 2022.

### **7.5 Composting**

CRSB is waiting on positive decisions on composting. With this opportunity, Central can achieve the diversion rate of 50% as identified in the Provincial Waste Management Strategy.

### **7.6 Fire Protection**

CRSB, with assistance from the Province, has signed off on a MOU with the Town of Norris Arm to provide fire protection services for the Regional Site. (signed September 2022)

MOU's are now being prepared for the seven (7) Transfer Stations. We hope all will be in place by 2023



## **8.0 Appendices**

- 8.1 CRSB Governance Model (Revised January 2017) (under review)
- 8.2 CRSB Audited Financial Statements 2021