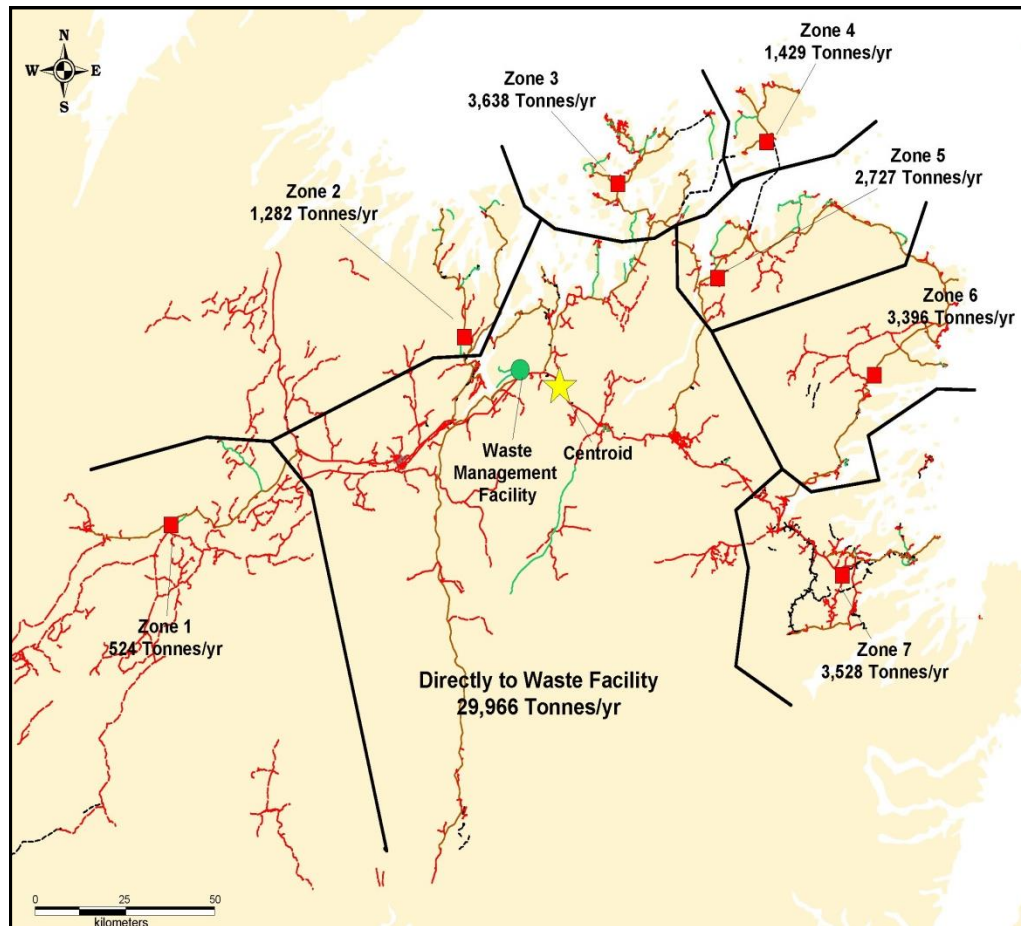


Central Regional Service Board

2019 Annual Report



Prepared By: Robert Elliott
Chair

Date: June 30th, 2020



Central Newfoundland Waste Management

P. O. Box 254, Norris Arm, NL, A0G 3M0

Phone: 709 653 2900

Fax :709 653 2920

Web: www.cnwmc.com E-mail: Info@cnwmc.com

Message from the Chair

On behalf of the Board of Directors of the Central Regional Service board, I am pleased to present the 2017 Annual Report as required under the Provincial Regional Service Boards Act 2012. (Revised 2015)

This report will give an overview of the Central Regional Service Board and its contribution to the Provincial Waste Management Strategy. It will identify its business units, staffing levels, expansion of operation in 2017 and future plans.

Attached you will also find the CRSB Governance Model (revised January 2017) Appendix A and a copy of the 2017 Financial Statements, Appendix C.

Should you have any questions or concerns, please feel free to contact our CRSB office.

Sincerely,

Robert Elliott

Chairperson, CRS

Table of Contents

Central Regional Service Board (CRSB) and Central Newfoundland Waste Management (CNWM)- Board & Boundaries.	1
CRSB 2016 Board Members	2
The Regional Waste Management Site	3-10
CRSB Business Units	11
CRSB Curb Side Collection Program	16
CRSB Water/Waste Water Pilot Project	17
Contribution to the Provincial Waste Management Strategy	17
Future Plans of CRSB	18
Appendices	19

1. The Central Regional Service Board (the Board) was established in 2008 and is governed under the Provincial *Regional Service Boards Act* 2012 revised 2015. The Board's power includes the construction and operation of the regional Solid Waste disposal site and seven local Waste Management Facilities. It is empowered to set and charge user fees to municipal authorities, local service districts, unincorporated areas, benefited by a regional facility and other entities as required.
2. Prior to 2008, the entity operated as Central Newfoundland Waste Management (CNWM). It continues to operate under the business name of CNWM, as it identifies the service we provide and is recognized by the communities and customers we serve in the central region. All legal documents are signed under the name of Central Regional Service Board.

Central Regional Service Board boundaries, as established under the Regional Service Board Act 2012, revised 2015, are from Terra Nova National Park (park included) in the East, Buchans in the West and Fogo Island/Twillingate in the North.

Board Boundaries

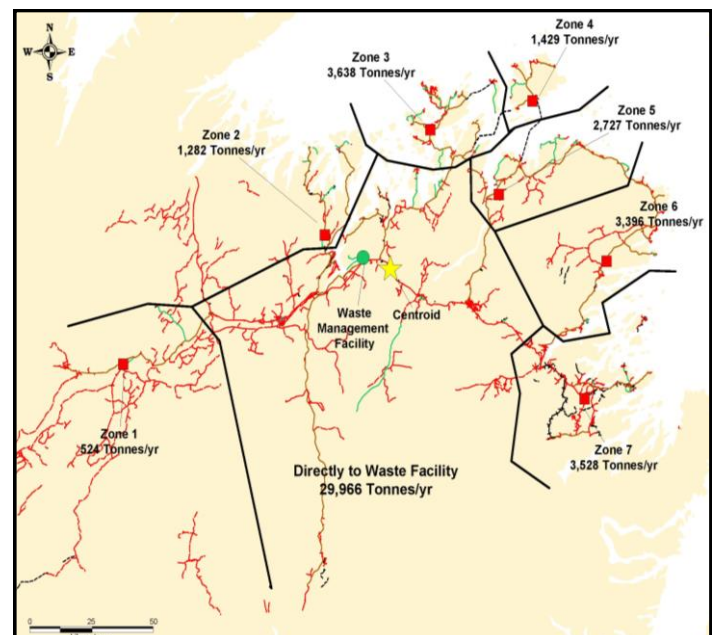
Regional Site

Route 3-1-09

Norris Arm North Access Road

Ward 1 -Buchans Area
 Ward 2 -Point Leamington Area
 Ward 3 -New World Island/Twillingate
 Ward 4 -Fogo Island
 Ward 5 -Gander Bay
 Ward 6 -Indian Bay
 Ward 7 -Terra Nova
 Ward 8 -Gander
 Ward 9 – Grand Falls Windsor
 Ward 10-Bishops Falls, Botwood & Lewisporte
 Ward 11-Norris Arm North & South
 Ward 12-Direct Haul

The total population served by CRSB is approximately 32,200 households with 72,500 residents and approximately 3,000 businesses



The Central Regional Service Board's Office is located at the Regional site, Route 3-01-09 Norris Arm North Access Road. Staffing levels have reached thirty-eight (38) full time

positions; six (6) at the Administration Building, nine (9) at the Regional Site, seven (7) at the Local Waste Management Sites, nine (9) Collection Drivers, and seven (7) part time/call-ins. Contact information: Phone: 709 653-2900; Fax: 709 653-2920; Email: info@cnwmc.com

The Board shall meet no fewer than 6 times a year for the disposition of general business. Special board meetings may be called by the Chairperson, or on the written request of four members.

3. The Board's Governance Model delineates the number of members and representation of towns and zones within the board's geographic boundaries. As per the Governance Model a full board includes, twelve Board members (Chair included).

(Appendix A – Governance Model). Revised January 2017.

The 2019 Board members are as follows:

Name	Ward Represented
Mr. Gary Noftel	Buchan's Junction (Ward 1)
Mr. Robert Elliott, Chairperson	Point Leamington (Ward 2)
Mr. Kevin Butt	New World Island/Twillington (Ward 3)
Mr. Wayne Collins	Fogo Island (Ward 4)
Mr. Keith Howell	Gander Bay (Ward 5)
Mr. Lloyd Pickett	New-Wes-Valley/Indian Bay (Ward 6)
Mr. Glenn Arnold – Vice Chair	Terra Nova Area (Ward 7)
Mr. Percy Farwell - Secretary	Gander (Ward 8)
Mr. Rod Bennett	Grand Falls Windsor (Ward 9)
Mr. Derrick White	Bishops Falls/Botwood/Lewisporte (Ward 10)
Mr. Ross Rowsell	Norris Arm North & South (Ward 11)
Mr. Derrick Luff	Centroid (Ward 12)

The Board oversees the continued construction and operation of the Central regional site at Norris Arm North access road and 7 local waste management facilities (transfer stations). As well, the Board continues through its Management Staff to monitor the day to day operations of these sites.

4.0 The Regional Waste Management Site includes the following facilities:

4.1 Administration Building



The Administration building has a staff of six to oversee the Central Regional Waste Management System. As well as an office to accommodate the water/waste water specialist. The building also includes a training room which can accommodate school tours or groups that request a tour of the Regional Waste Management Facility.

4.2 Scale House and Scale



The Scale house has an automated system that allows all customers entering the site to use radio frequency identifying cards which identifies the customer and automatically send invoices to the customer.

4.3 Public Drop Off Area

Public Drop Off Area allows residents to bring their waste and sort it at the appropriate bins. The Public Drop Off also houses an electronic waste centre, paint waste, metals, tires, oils and oil products. and a residential hazardous waste area. This site is operational 6 days a week. (Monday – Saturday).



E-Waste



Metal Laydown Area



Product Care Paint Waste Storage



4.4 2nd generation lined landfill with full leachate control system. (cell # 1 & 2)



4.5 Leachate Control Building and Lagoons



This is the only 2nd generation lined landfill with full leachate treatment control in the Province. The system has liners in the ground which collect all leachate and directs it to a leachate treatment process. This operation treats the leachate before it is released to the environment. Leachate monitoring tests are reported monthly.

4.6 Maintenance Garage.



CRSB does the majority of its maintenance on its fleet of trucks and heavy equipment at this site as well as the collection trucks and trailers

4.7 Construction /Demolition laydown area and burial site.



Materials that are identified in the “Certificate of Approval” (CAO) by the Dept. of Environment as inert (causing no damage to our environment) are permitted to be lodged in the Construction and Demolition (C & D) laydown area. Materials that have future uses are kept for processing or sale. The materials that have no future uses can be buried in the C & D landfill site. Materials such as wood fiber will be processed for sale. Materials such as shingles, glass, non – program tires (MMSB), gyprock etc. will be buried in the C & D laydown area.

Adjacent to the C & D site is an approved burial site for asbestos waste.

4.8 The Material Recovery Facility (MRF).



The Material Recovery Facility went into operation in March, 2015. Its operating under a contract with Herbert's Recycling Inc. and process in excess of 4300 tons of recyclables in 2019.

4.9 Typical Transfer Station



The seven (7) Transfer Stations provide a similar level of service to its sub- regions within the Central Region. The locations selected included the fact that no community had more than

100 km or one-hour drive to dispose of its waste, and that no matter where you lived, everyone pays the same fees for services

List of Transfer Stations:

- Buchans Junction
- Point Leamington
- Gander Bay
- NWI/Twillingate
- Fogo Island
- Indian Bay
- Terra Nova

5. Business Units

5.1 Waste Disposal

In 2019, CRSB handled 74,827 tonnes of waste at the Regional Site and seven (7) Transfer Station Sites. Below is a list of product types & tonnage for each of the waste streams.

Types and Quantities of Waste Received in 2019:

1. Clear Garbage Bags.....	53,566 Tonne
2. Clear Garbage Bags (WRSB).....	2,965 Tonne
3. Transparent Blue Bags.....	2,590 Tonne
4. Transparent Blue Bags (WRSB).....	832 Tonne
5. Construction/Demolition/Bulk (Sorted).....	7,144 Tonne
6. Construction/Demolition/Bulk (Mixed).....	8,373 Tonne
7. Wood Products.....	2 Tonne
8. Metals	918 Tonne
9. Cardboard.....	1,101 Tonne
10. Household Hazardous Waste (HHW).....	18 Tonne
11. E-Waste.....	44 Tonne
12. Tires.....	151 Tonne
Total Tonnage.....	74,827 Tonne

5.2 New five Year (5) Landfill Cell

In 2016, Central Regional Service Board, with the assistance of the Dept. of Municipal Affairs and the Dept. of Environment constructed a 2nd lined landfill attached to the existing cell for continued leachate treatment. This new cell will handle the disposal of waste from the West coast, Northern Peninsula, BaieVerte/Green Bay and Coast of Bays for the next five (5) years



5.3 Material Recovery Facility Operation

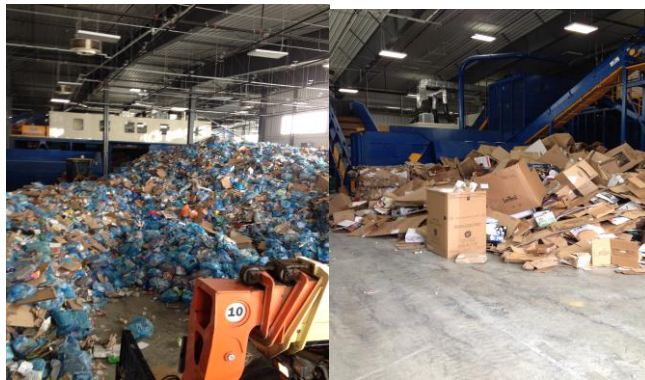
By December of 2017, The Material Recovery Facility (MRF) had seen 32 months of operations.

Attachment MRF No. 1 shows the monthly tonnage of blue bag and cardboard received at the MRF for 2016 and 2017.

The blue bag tonnage dropped by 159.44 tonnes and the cardboard by 197.56 tonnes. Total tonnage for the MRF dropped by 357 tonnes. (Clear Bags garbage was also down by 570 tonnes).

In the case of cardboard, a major commercial hauler began bailing and selling its own cardboard products.

Fall/winter 2017/2018, a new web page was designed and a mandatory plan developed to reinforce the Sort It Central Recycling and Garbage Program. Hopefully results will be reflected in 2018.





ATTACHMENT MRF NO. 1 Material Recovery Facility Tonnage in 2016 – 2017

Date: 2016	Blue Bag:	Cardboard:	Total:	
January	237.94	93.18	331.12	
February	207.57	93.93	306.47	
March	223.93	112.13	336.06	
April	232.03	108.43	340.46	
May	254.91	109.02	363.93	
June	262.42	115.00	377.42	
July	223.23	112.92	336.15	
August	235.52	137.99	373.51	
September	234.22	124.29	358.51	
October	220.94	120.09	341.03	
November	243.67	134.47	378.14	
December	245.22	104.52	349.74	
TOTAL	2,821.60	1,365.97	4,187.57	
Date: 2017	Blue Bag:	Cardboard:	Total:	
January	229.48	98.70	328.18	
February	196.88	79.22	276.14	
March	220.94	93.93	314.87	
April	199.07	100.02	299.09	
May	254.84	117.90	372.74	
June	243.29	103.69	346.98	
July	208.10	95.70	303.80	

August	243.74	111.86	355.60	
Sept	231.14	96.86	328.00	
October	205.71	96.70	302.41	
November	220.64	81.57	302.21	
December	208.33	92.26	300.59	
TOTAL	2662.16	1168.41	3830.57	(-357 T)

(-159.44 T)

(-197.56 T)

In 2017 CNWM (through Hebert's Recycling Inc.) shipped out the following products:

1.	Cardboard	1273.44 Tonnes
2.	Mixed Paper	1211.31 Tonnes
3.	PET (small plastics)	112.84 Tonnes
4.	HDPE (large plastics)	79.48 Tonnes
5.	Mixed Tubs/Lids	20.49 Tonnes
6.	Aluminum	30.47 Tonnes
7.	Tin	223.38 Tonnes
8.	Poly C Milk/Tetra Packaging	75.62 Tonnes
	Total shipped in 2017	3027.02 Tonnes

What happens to the recycled materials from the MRF?

1. **Cardboard:** Sent to paper mills and into repulper. A fiber mat is created. Used to make new cardboard boxes, cereal boxes, gift boxes, tubes & core board for paper towels etc.
2. **Mixed Paper:** Sent to a paper mill, the recovered fiber is refined and cleaned. Used to make recycled paper, covers for hard cover books, game boards and cereal boxes etc.
3. **PLASTIC- Polyethylene Terephthalate (PET):**

Sent to Canadian Companies to be flaked and rolled into sheets of plastic. Used for organic egg cartons, take out containers & cartons.

4. PLASTIC- High Density Polyethylene- (HDPE):

Sent to Canadian Companies for processing, used to make drainage pipes for disposal fields.

5. Mixed tubs and lids, same as (PET).

6. Aluminum: Sent to the U.S. It is shredded, melted, and rolled into sheets, can be used to make new aluminum cans, plates, siding, etc.

7. Tin: Sent out through Newco Metals (NL), moved to markets in North America, used to make tin/steel products – tin cans, appliances, automobiles, rebar, pipe, etc.

8. Poly C milk/tetra and gable:

Sent to National and International markets, used to make new cereal boxes, boxboard, corrugated cardboard etc.



5.4 Curb Side Collection Program

CRSB has eleven (11) modern split stream collection trucks. The split Stream Truck allows for a single pass at curbside to collect both the blue recycling bag and clear garbage bag.

In 2017, the collection process included 79 communities/17,311 households.





5.5 Water/Waste Water Pilot Project

CRSB has partnered with The Department of Municipal Affairs and Environment:

1. Oversee the regular operations and maintenance of public drinking water and waste/water systems and provide recommendations for improvements.
2. Development and implementation of operational monitoring programs.

Through the Province; ten (10) towns and seven (7) Local Service Districts have been identified to participate in the project. These 17 communities are located in five (5) clusters in Central Newfoundland. Only four (4) now remain on boil order.

This is a 3 year pilot program ending March 31st, 2019.

6. Contribution to the Provincial Waste Management Strategy

In 2017, CRSB has contributed to the Provincial Waste Management Strategy in the diversion of waste going to the landfill. With the total tonnage brought through the CRSB operations of 43,788 tonnes and diversions of 9561 tonnes, diversion rate is 21.8%.

Diversion Types and Quantities 2017

Types of Waste	Tonnes
-----------------------	---------------

Blue Bag	2650
Construction & Demolition	4702
Cardboard	1169
E-Waste	50
HHW	26
Metals	942
Wood	22
TOTAL TONNAGE	9561

CRSB continues to strive towards greater diversions rate. The next step will come with the introduction of composting.

7. Future Plans of CRSB

7.1 West Coast & Peninsulas Waste

CRSB looks forward to the Regional Service Boards from West Coast and Peninsulas (Northern Peninsula, Baie Verte/Green Bay, and Coast of Bays) bringing their waste to Central Newfoundland. With the opportunity of doubling the amount of waste, CRSB can maximize its efficiency of operation, and stabilize the economics of waste management for Central, Western, and the Peninsulas. Economy brings efficiencies, and everyone benefits.

7.2 Composting

CRSB is waiting for the positive decision on the composting facility. With this opportunity, Central and West can achieve the diversion rate of 50% as outlined in the Provincial Waste Management Strategy.

7.3 Development of CRSB Industrial Area

CRSB will continue to look for additional tenants for the additional 30 acre it has for its Industrial Area.

MMSB presently has a 10 acre laydown yard with the first right of refusal for an additional 10 acres.

7.4 Wood Shredding Potentials

CRSB still has about 20,000 tonnes of wood fiber on its 8 sites (Regional Site and seven (7) transfer station sites). CRSB is awaiting direction from the Province to provide the most cost efficient way to process and find a re-use for the product not only for Central, but for the Provincial Waste Management Systems.

7.5 Solutions for Septic Waste

CRSB is looking forward to working with the various Provincial Dept. and private enterprise to finding a resolution to the challenges of residential & commercial septic waste. CRSB went out with a RFP for septic waste. Two bidders responded but to date no private sector company has been willing to commit to funding the project with the uncertainty of the volumes in Central Newfoundland.

8.0 CRSB 2017 Audited Financial Statement

Appendix –C – Audited Financial Statement

8.1 Appendices

- A Governance Model, (Revised January 2017)
- B Tipping Fees, 2017
- C 2017 Audited Financial Statement

