



# **Central Regional Service Board 2015 Annual Report**

**Prepared By:** Allan Scott  
Chair

**Date:** June 30<sup>th</sup>, 2016



**Central Newfoundland Waste Management**

P. O. Box 254, Norris Arm, NL, A0G 3M0

Phone: 709 653 2900

Fax :709 653 2920

Web: [www.cnwmc.com](http://www.cnwmc.com) E-mail: [Info@cnwmc.com](mailto:Info@cnwmc.com)

---

**Message from the Chair**

On behalf of the Board of Directors of the Central Regional Service board, I am pleased to present the 2015 Annual Report as required under the Provincial Regional Service Boards Act 2012.

This report will give an overview of the Central Regional Service Board and its contribution to the Provincial Waste Management Strategy. It will identify its business units, staffing levels, expansion of operation in 2015 and future plans.

Attached you will also find the CRSB Governance Model and a copy of the 2015 Financial Statements.

Should you have any questions or concerns, please feel free to contact our CRSB office.

Sincerely,

**Allan Scott**

**Chairperson, CRSB**

## **Table of Contents**

Central Newfoundland Waste Management	1
Board Boundaries	1
Board Members	2
The Regional Waste Management Site	3-8
Business Units	9
Curb Side Collection Program	10
Diversion Types and Quantities	11
Purchase of Grinder	12
Appendices	13

1. The Central Regional Service Board (the Board) was established in 2008 and is governed under the Provincial *Regional Service Boards Act* 2012. The Board's power includes the construction and operation of the regional Solid Waste disposal site and seven local Waste Management Facilities. It is empowered to set and charge user fees to municipal authorities, local service districts, unincorporated areas, benefited by a regional facility and other entities as required.

**(Appendix A –Legislative Mandate)**

2. Prior to 2008, the entity operated as Central Newfoundland Waste Management (CNWM). It continues to operate under the business name of CNWM as it identifies the service we provide and is recognized by the communities and customers we serve in the central region. All legal documents are signed under the name of Central Regional Service Board.

Central Regional Service Board boundaries, as established under the Regional Service Board Act 2012, are from Terra Nova National Park (park included) in the east, Buchans in the west and Fogo Island/Twillingate in the north.

## Board Boundaries

### Regional Site (Centroid)

Route 3-01-09

Norris Arm North Access Road

### Local Waste Management Facilities

Zone 1 -Buchans Area

Zone 2 -Point Leamington Area

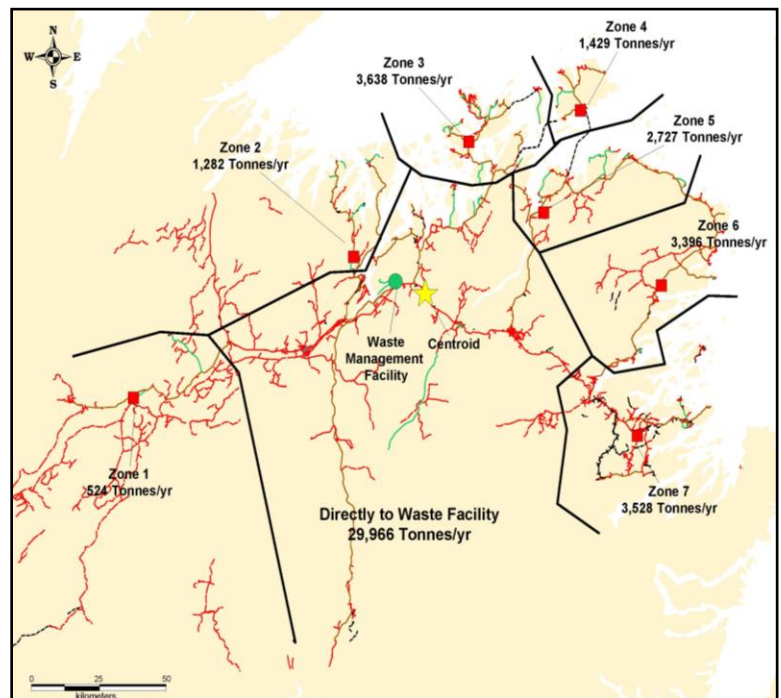
Zone 3 -New World Island/Twillingate

Zone 4 -Fogo Island

Zone 5 -Gander Bay

Zone 6 -Indian Bay

Zone 7 -Terra Nova



The total population served by CRSB is approximately 31,000 households with 70,000 residents and 3,000 business

The Central Regional Service Board's Office is located at the Regional site, Route 3-01-09 Norris Arm North Access Road. Staffing levels have reached thirty-two (32) full time positions; six (6) at the Administration Building, ten (10) at the Regional Site, seven (7) at the Local Waste

Management Sites and nine (9) Collection Drivers.

Contact information: Phone: 709 653-2900; Fax: 709 653 – 2920; Email: info@cnwmc.com

The Board shall meet no fewer than 6 times a year for the disposition of general business. Special board meetings may be called by the Chairperson, or on the written request of four members.

3. The Board's Governance Model delineates the number of members and representation of towns and zones within the board's geographic boundaries. As per the Governance Model a full board includes, a Chairperson and twelve Board members

**(Appendix B – Governance Model)**

The 2015 Board members are as follows:

Name	Town/Zone Represented
Mr. Allan Scott	Chairperson
Mr. Michael Patey	Buchan's Junction (Zone 1)
Mr. Robert Elliott	Point Leamington (Zone 2)
Mr. Terry Breaitt	New World Island/Twillington (Zone 3)
Mr. Andrew Shea	Fogo Island (Zone 4)
Mr. Sam Winsor	Gander Bay (Zone 5)
Mr. Winston Perry	New-Wes-Valley/Indian Bay (Zone 6)
Mr. Glenn Arnold	Terra Nova Area (Zone 7)
Mr. Bruce Moores	Town of Grand Falls – Windsor
Mr. Derrick Luff	Local Service District – Centroid Area
Mr. Angus McLoughlin	Norris Arm/Norris Arm North
Mr. Robert Hobbs/ Dennis Woolridge	Towns of Bishops Falls/Botwood/Lewisporte
Mr. Claude Elliott	Town of Gander

The Board oversees the continued construction and operation of the Central regional site at Norris Arm North access road and 7 local waste management facilities (transfer stations). As well, the Board continues to monitor the day to day operations of these sites.

The site includes:

#### **4.0 The Regional Waste Management Site includes the following facilities:**

##### **4.1 Administration Building**



The Administration building has a staff of six for waste management as well as the office for the water/waste water specialist. It also includes a training room which can accommodate school tours or large groups touring the facility.

##### **4.2 Scale House and Scale**



The Scale house has an automated system that allows all customers entering the site to use radio frequency identifying codes which identifies the customer and automatically send invoices to the customer.

#### **4.3 Public Drop Off Area**



Public Drop Off Area allows residents to bring their waste and sort it at the appropriate bins. The Public Drop Off also houses an electronic waste centre, paint disposal area and hazardous waste area. This site is operational 6 days a week.

#### **4.4 2Nd generation lined landfill with full leachate control system.**



#### **4.5 Leachate Control Building**



This is the only 2<sup>nd</sup> generation lined landfill with full leachate treatment centre in the Province. The system has liners in the ground which collects any leachate and directs it to a leachate treatment plant. The plant then treats the leachate before it is released to the environment. Leachate monitoring test is reported monthly.

#### **4.6 Maintenance Garage.**





CRSB does the majority of its maintenance on its fleet of trucks and heavy equipment operation at this site as well as the collection trucks and trailers

#### **4.7 Construction /Demolition laydown area and burial site.**



Construction and Demolition materials are inert and causes no damage to the environment. CRSB will find markets its wood products and all remaining building material will be disposed of on the site.

Near this site is an asbestos burial area is to take care of their special waste.

#### **4.8 A New Material Recovery Facility Operation.**



The Material Recovery Facility went into operation in March 2015. It is operating under a contract with Herbert's Recycling Inc. and processes in excess of 3600 tons of waste annually.

The seven (7) Transfer Stations provide a similar level of service to its sub-regions within the Central Region. The locations selected included the fact that no community had more than 100 km or one hour drive to dispose of its waste, and that no matter where you lived, everyone pays the same fees for services.

#### **4.9 Typical Transfer Station**



Transfer Stations are located at the west entrance of Terra Nova Park, Indian Bay, Gander Bay, Fogo Island, Chapel Island, Point Leamington, and Buchans.

## **5. Business Units**

### **5.1 Waste Disposal**

In 2015, CRSB handled 45,689 tonnes of waste at the Regional Site and seven Transfer Station Sites. Below is a list of product types & tonnage for each of the waste streams.

Types and Quantities of Waste Received in 2015:

1. Wet /Dry Unsorted.....	4,279 Tonne
2. Clear Garbage Bags.....	20,518 Tonne
3. Transparent Blue Bags.....	2,188 Tonne
4. Construction/Demolition/Bulk (Sorted).....	8,510 Tonne
5. Construction/Demolition/Bulk (Mixed).....	5,681 Tonne
6. Free (Clean Soil, Milled Asphalt, etc.) .....	2,236 Tonne
7. Wood Products.....	33 Tonne
8. Metals .....	897 Tonne
9. Cardboard.....	988 Tonne
10. Household Hazardous Waste (HHW).....	17 Tonne
11. E-Waste.....	181 Tonne
12. Tires.....	161 Tonne
<b>Total Tonnage.....</b>	<b>45,689 Tonne</b>

By July 2015, CRSB began operation of the New Material Recovery Facility (MRF).

CRSB has contracted out the operation of the Material Recovery Facility to Hebert's Recycling Inc. They bring to the table the skills of operating such a facility and the ability & find market places for the various products produced at the M.R.F.

CRSB has supported HRI in their efforts with an aggressive marketing program. With an upgraded website, radio, newsprints and direct mail campaigns marked the Residential & Commercial entities from a solid colored black/green garbage bag to the transparent blue bag for recycling and the transparent clear bag for garbage.

Attached is a sample of the Sort It – Central Recycling & Garbage Program.

#### **Appendix D – Sort It – Central Recycling & Garbage Program**

By the end of 2015, 20% of residential waste collected at the curbside was being processed at the Material Recovery facility. The Residential Program was a great success; the Commercial Program needed more time to become effective.

### **5.2 Curb Side Collection Program**

CRSB has ten (10) modern split stream collection trucks. The split Stream Truck allows for a single pass at curbside to collect both clear and blue bag garbage.

In 2015, the collection process included 78 communities/16,870 households.



### 5.3 Water/Waste Water Pilot Project

CRSB has partnered with The Department of Intergovernmental and Municipal Affairs and The Department of Environment & Conservation to:

1. Oversee the regular operations and maintenance of public drinking water and wastewater systems and provide recommendations for improvements.
2. Development and implementation of operational monitoring programs.

Through the two (2) departments; five (5) towns and seven (7) Local Service Districts have been identified to participate in the project. These 12 communities are located in three (3) clusters in Central Newfoundland.

This is a 3 year pilot program ending March 31<sup>st</sup>, 2019.

### 6. Contribution to the Provincial Waste Management Strategy

In 2015, CRSB has contributed to the Provincial Waste Management Strategy in the diversion of waste going to the landfill. With the total tonnage brought through the CRSB operations of 45,689 tonnes and diversions of 8558 tonnes, diversion rate is 18.7%. The Material Recovery Facility was in operation for 9 months in 2015. There are plans to divert a higher percentage of wood products.

#### Diversion Types and Quantities 2015

Types of Waste	Tonnes
Blue Bag	2189

Construction & Demolition 50%	4255
Cardboard	988
E-Waste	181
HHW	17
Metals	897
Wood	31
<b>TOTAL TONNAGE</b>	<b>8558</b>

CRSB continues to strive towards greater diversions rate. The next step will be composting.

## **7. Future Plans of CRSB**

### **7.1 West Coast & Peninsulas Waste**

CRSB looks forward to the West Coast and Peninsulas (Northern Peninsula, Green Bay, Baie Verte, and Coast of Bays) bringing their waste to Central Newfoundland. With the opportunity of doubling the amount of waste, CRSB can maximize its efficiency of operation, and stabilize the economics of waste management for Central, Western, and the Peninsulas. Economy brings efficiencies, and everyone benefits.

### **7.2 Composting**

CRSB is waiting for the positive decision on the composting facility. With this opportunity, Central and West can achieve the diversion rate of 50% as outlined in the Provincial Waste Management Strategy.

### **7.3 Solutions for Septic Waste**

CRSB is looking forward to working with the various Provincial Dept. and private enterprise to finding a resolution to the challenges of residential & commercial septic waste. CRSB went out with a RFP for septic waste. Two bidders responded but to date no private sector company has been willing to commit to funding the project with the uncertainty of the volumes in Central Newfoundland.

### **7.4 Development of CRSB industrial Area**

CRSB has planned a 50 acre lot for the opportunity to partner with entities to develop industries that deal with waste products. Plans will include laydown areas for storage and processing of waste products, find a resolution to septic challenges and others as they arise on the waste scene.

## **7.5 Purchase of Grinder**

CRSB is working closely with the Dept. of Municipal Affairs and The Multi Material Stewardship Board (MMSB) in reviewing the option of reducing the volume of waste material for final burial or for other re-use (sale). In 2016 CRSB will go to tender for the purchase of a Horizontal Grinder. This Grinder will be there for the benefit of not only Central Newfoundland, but for the Province of NL to help reduce the size of waste materials and prepare these materials for other use.

CRSB is also waiting on final decision on the construction of a compost facility as identified in the study of options for organic waste processing in the Province of Newfoundland and Labrador.

## **8.0 CRSB 2015 Audited Financial Statement**

### **Appendix –E – Audited Financial Statement**

## **8.1 Appendices**

- A Legislative Mandate
- B Governance Model
- C Tipping Fees
- D Sort it –Central Recycling & Garbage Program
- E 2015 Audited Financial Statement

