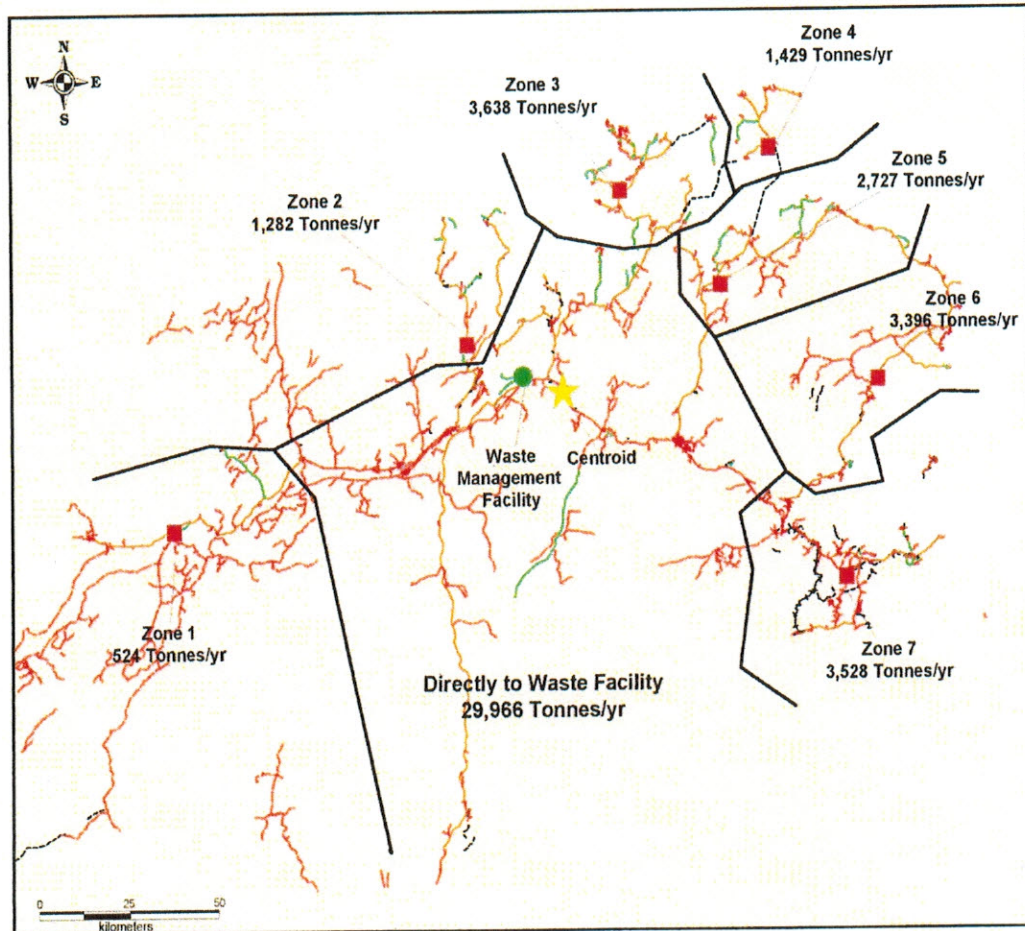




Central Regional Service Board 2016 Annual Report



Prepared By: Allan Scott
Chair

Date: June 30th, 2017



Central Newfoundland Waste Management

P. O. Box 254, Norris Arm, NL, A0G 3M0

Phone: 709 653 2900

Fax :709 653 2920

Web: www.cnwmc.com E-mail: Info@cnwmc.com

Message from the Chair

On behalf of the Board of Directors of the Central Regional Service board, I am pleased to present the 2016 Annual Report as required under the Provincial Regional Service Boards Act 2012. (Revised 2015)

This report will give an overview of the Central Regional Service Board and its contribution to the Provincial Waste Management Strategy. It will identify its business units, staffing levels, expansion of operation in 2016 and future plans.

Attached you will also find the CRSB Governance Model (revised January 2017) and a copy of the 2016 Financial Statements.

Should you have any questions or concerns, please feel free to contact our CRSB office.

Sincerely,

Allan Scott

Chairperson, CRSB

Table of Contents

Central Regional Service Board (CRSB) and Central Newfoundland Waste Management (CNWM)	1
CRSB Board Boundaries	1
CRSB 2016 Board Members	2
The Regional Waste Management Site	3-8
CRSB Business Units	9
CRSB Curb Side Collection Program	15
CRSB Water/Waste Water Pilot Project	16
Contribution to the Provincial Waste Management Strategy	16
Future Plans of CRSB	17
Appendices	18

1. The Central Regional Service Board (the Board) was established in 2008 and is governed under the Provincial *Regional Service Boards Act* 2012 revised 2015. The Board's power includes the construction and operation of the regional Solid Waste disposal site and seven local Waste Management Facilities. It is empowered to set and charge user fees to municipal authorities, local service districts, unincorporated areas, benefited by a regional facility and other entities as required.
(Appendix A –Legislative Mandate)

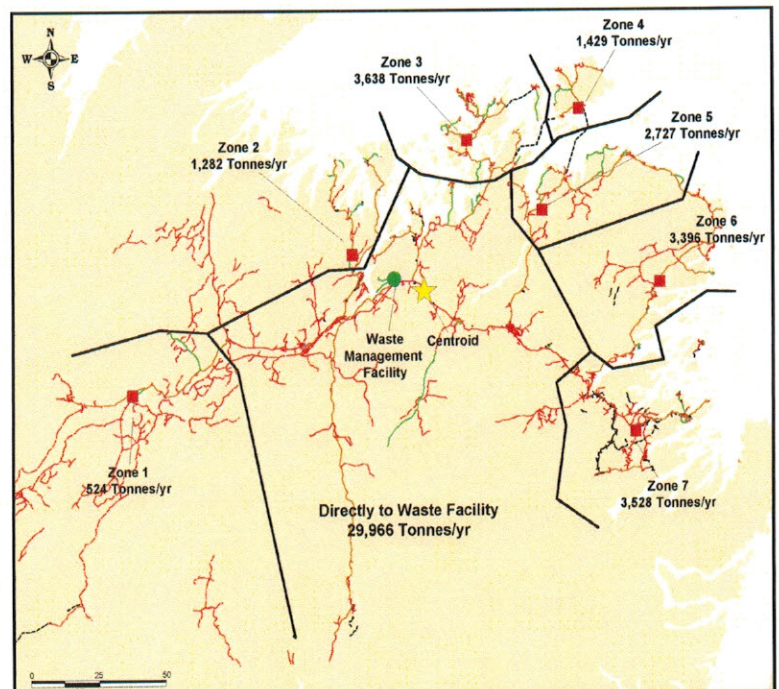
2. Prior to 2008, the entity operated as Central Newfoundland Waste Management (CNWM) It continues to operate under the business name of CNWM as it identifies the service we provide and is recognized by the communities and customers we serve in the central region. All legal documents are signed under the name of Central Regional Service Board.

Central Regional Service Board boundaries, as established under the Regional Service Board Act 2012, revised 2015 are from Terra Nova National Park (park included) in the East, Buchans in the West and Fogo Island/Twillingate in the North.

Board Boundaries

Regional Site (Centroid)
 Route 3-01-09
 Norris Arm North Access Road

Local Waste Management Facilities
 Zone 1 -Buchans Area
 Zone 2 -Point Leamington Area
 Zone 3 -New World Island/Twillingate
 Zone 4 -Fogo Island
 Zone 5 -Gander Bay
 Zone 6 -Indian Bay
 Zone 7 -Terra Nova



The total population served by CRSB is approximately 32,200 households with 72,500 residents and 3,000 businesses

The Central Regional Service Board's Office is located at the Regional site, Route 3-01-09 Norris Arm North Access Road. Staffing levels have reached thirty-four (34) full time positions; six (6) at the Administration Building, twelve (12) at the Regional Site, seven (7) at the Local Waste Management Sites and nine (9) Collection Drivers.
 Contact information: Phone: 709 653-2900; Fax: 709 653-2920; Email: info@cnwmc.com

The Board shall meet no fewer than 6 times a year for the disposition of general business. Special board meetings may be called by the Chairperson, or on the written request of four members.

3. The Board's Governance Model delineates the number of members and representation of towns and zones within the board's geographic boundaries. As per the Governance Model a full board includes, a Chairperson and twelve Board members
(Appendix B – Governance Model). Revised January 2017.

The 2016 Board members are as follows:

Name	Town/Zone Represented
Mr. Allan Scott	Chairperson
Mr. Michael Patey	Buchan's Junction (Zone 1)
Mr. Robert Elliott	Point Leamington (Zone 2)
Mr. Terry Breault	New World Island/Twillingate (Zone 3)
Mr. Andrew Shea	Fogo Island (Zone 4)
Mr. Sam Winsor	Gander Bay (Zone 5)
Mr. Winston Perry	New-Wes-Valley/Indian Bay (Zone 6)
Mr. Glenn Arnold	Terra Nova Area (Zone 7)
Mr. Bruce Moores	Town of Grand Falls – Windsor
Mr. Derrick Luff	Local Service District – Centroid Area
Mrs. Marjorie Gaulton	Norris Arm/Norris Arm North
Mr. Robert Hobbs/ Dennis Woolridge	Towns of Bishops Falls/Botwood/Lewisporte
Mr. Claude Elliott	Town of Gander

The Board oversees the continued construction and operation of the Central regional site at Norris Arm North access road and 7 local waste management facilities (transfer stations). As well, the Board continues to monitor the day to day operations of these sites.

The site includes:

4.0 The Regional Waste Management Site includes the following facilities:

4.1 Administration Building



The Administration building has a staff of six for waste management as well as the office for the water/waste water specialist. It also includes a training room which can accommodate school tours or large groups touring the facility.

4.2 Scale House and Scale



The Scale house has an automated system that allows all customers entering the site to use radio frequency identifying cards which identifies the customer and automatically send invoices to the customer.

4.3 Public Drop Off Area



Public Drop Off Area allows residents to bring their waste and sort it at the appropriate bins. The Public Drop Off also houses an electronic waste centre, paint disposal area and a residential hazardous waste area. This site is operational 6 days a week.

4.4 2nd generation lined landfill with full leachate control system.



4.5 Leachate Control Building



This is the only 2nd generation lined landfill with full leachate treatment control in the Province. The system has liners in the ground which collect all leachate and direct it to a leachate treatment process. This operation treats the leachate before it is released to the environment. Leachate monitoring tests are reported monthly.

4.6 Maintenance Garage.



CRSB does the majority of its maintenance on its fleet of trucks and heavy equipment at this site as well as the collection trucks and trailers

4.7 Construction /Demolition laydown area and burial site.



Materials that are identified in the “Certificate of Approval” (CAO) by the Dept. of Environment as inert (causing no damage to our environment) are permitted to be lodged in the Construction and Demolition (C & D) laydown area. Materials that have future uses are kept for processing or sale. The materials that have no future uses can be buried in the C & D landfill site. Materials such as wood fiber will be processed for sale. Materials such as shingles, glass, non – program tires (MMSB), gyprock etc. will be buried in the C & D laydown area.

Adjacent to the C & D site is an approved burial site for asbestos waste.

4.8 The Material Recovery Facility (MRF).



The Material Recovery Facility went into operation in March 2015. Its is operating under a contract with Herbert's Recycling Inc. and process in excess of 3600 tons of waste annually.

4.9 Typical Transfer Station



The seven (7) Transfer Stations provide a similar level of service to its sub- regions within the Central Region. The locations selected included the fact that no community had more than 100 km or one hour drive to dispose of its waste, and that no matter where you lived, everyone pays the same fees for services

5. Business Units

5.1 Waste Disposal

In 2016, CRSB handled 49,865 tonnes of waste at the Regional Site and seven Transfer Station Sites. Below is a list of product types & tonnage for each of the waste streams.

Types and Quantities of Waste Received in 2016:

1. Clear Garbage Bags.....	24,090 Tonne
2. Transparent Blue Bags.....	2,820 Tonne
3. Construction/Demolition/Bulk (Sorted).....	9,405 Tonne
4. Construction/Demolition/Bulk (Mixed).....	6,742 Tonne
5. Free (Clean Soil, Milled Asphalt, etc.)	4,295 Tonne
6. Wood Products.....	8 Tonne
7. Metals	930 Tonne
8. Cardboard.....	1,370 Tonne
9. Household Hazardous Waste (HHW).....	15 Tonne
10. E-Waste.....	82 Tonne
11. Tires.....	105 Tonne
Total Tonnage.....	49,865 Tonne

5.2 New five Year (5) Landfill Cell

In 2016, Central Regional Service Board, with the assistance of the Dept. of Municipal Affairs and the Dept. of Environment constructed a 2nd lined landfill attached to the existing cell for continued leachate treatment. This new cell will handle the disposal of waste from the West coast, Northern Peninsula, BaieVerte/Green Bay and Coast of Bays for the next five (5) years



5.3 Material Recovery Facility Operation

By December of 2016, The Material Recovery Facility (MRF) had seen 20 months of operations.

Attachment MRF No. 1 shows the monthly tonnage of blue bag and cardboard received at the MRF.

Attachment MRF No. 2 compares May – December 2015 tonnage to May - December 2016 tonnage. Results show an increase of 282.32 tonnes in 2016. The breakdown shows that blue bag tonnage increased by 105.35 (an average increase of 13.17 tonnes per month) and cardboard 176.97 tonnes (an average of 22.12 tonner per month).

The effectiveness of the Sort It Central - Recycling and Garbage Program resulted in better participation by local Residential and Commercial Customers.



ATTACHMENT MRF NO. 1

Material Recovery Facility Tonnage in 2015 - 2016

Date: 2015	Blue Bag:	Cardboard:	Total:
May	128.36	95.10	223.46
June	229.58	75.58	305.16
July	250.07	75.17	325.24
August	217.52	76.51	294.03
September	250.23	115.91	366.14
October	235.62	100.51	336.13
November	225.71	110.94	336.65
December	277.69	131.61	409.30
Date: 2016	Blue Bag:	Cardboard:	Total:
January	237.94	93.18	331.12
February	207.57	93.93	306.47
March	223.93	112.13	336.06
April	232.03	108.43	340.46
May	254.91	109.02	363.93
June	262.42	115.00	377.42
July	223.23	112.92	336.15
August	235.52	137.99	373.51
September	234.22	124.29	358.51
October	220.94	120.09	341.03
November	243.67	134.47	378.14
December	245.22	104.52	349.74

ATTACHMENT NO. 2 MRF

Material Recovery Facility Tonnage in 2015 - 2016

Date: 2015	Blue Bag:	Cardboard:	Total:
May	128.36	95.10	223.46
June	229.58	75.58	305.16
July	250.07	75.17	325.24
August	217.52	76.51	294.03
September	250.23	115.91	366.14
October	235.62	100.51	336.13
November	225.71	110.94	336.65
December	277.69	131.61	409.30
TOTAL	1814.78	781.33	2596.11
Date: 2016	Blue Bag:	Cardboard:	Total:
May	254.91	109.02	363.93
June	262.42	115.00	377.42
July	223.23	112.92	336.15
August	235.52	137.99	373.51
September	234.22	124.29	358.51
October	220.94	120.09	341.03
November	243.67	134.47	378.14
December	245.22	104.52	349.74
TOTAL	1920.13	958.30	2878.43
	+105.35	Plus 176.97	Plus 282.32 Ton
	13.17 Ton/Month	22.12 Ton/Month	35.29 Ton/Month

In 2016 CNWM (through Hebert's Recycling Inc.) shipped out the following products:

1.	Cardboard	1324.69 Tonnes
2.	Mixed Paper	1249.68 Tonnes
3.	PET (small plastics)	105.13 Tonnes
4.	HDPE (large plastics)	63.19 Tonnes
5.	Mixed Tubs/Lids	19.61 Tonnes
6.	Aluminum	19.10 Tonnes
7.	Tin	175.56 Tonnes
8.	Poly C Milk/Tetra Packaging	77.29 Tonnes
	Total shipped in 2016	3034.24 Tonnes

What happens to the recycled materials from the MRF?

1. **Cardboard:** Sent to paper mills and into repulper. A fiber mat is created. Used to make new cardboard boxes, cereal boxes, gift boxes, tubes & core board for paper towels etc.
2. **Mixed Paper:** Sent to a paper mill, the recovered fiber is refined and cleaned. Used to make recycled paper, covers for hard cover books, game boards and cereal boxes etc.
3. **PLASTIC- Polyethylene Terephthalate (PET):**
Sent to Canadian Companies to be flaked and rolled into sheets of plastic. Used for organic egg cartons, take out containers & cartons.
4. **PLASTIC- High Density Polyethylene- (HDPE):**
Sent to Canadian Companies for processing, used to make drainage pipes for disposal fields.
5. **Mixed tubs and lids, same as (PET).**
6. **Aluminum:** Sent to the U.S. It is shredded, melted, and rolled into sheets, can be used to make new aluminum cans, plates, siding, etc.

7. Tin: Sent out through Newco Metals (NL), moved to markets in North America, used to make tin/steel products – tin cans, appliances, automobiles, rebar, pipe, etc.

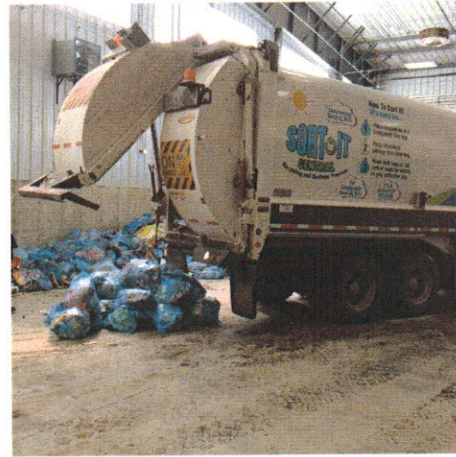
8. Poly C milk/tetra and gable:

Sent to National and International markets, used to make new cereal boxes, boxboard, corrugated cardboard etc.

5.4 Curb Side Collection Program

CRSB has eleven (11) modern split stream collection trucks. The split Stream Truck allows for a single pass at curbside to collect both the blue recycling bag and clear garbage bag.

In 2015, the collection process included 79 communities/17,311 households.



5.5 Water/Waste Water Pilot Project

CRSB has partnered with The Department of Intergovernmental and Municipal Affairs and The Department of Environment & Conservation to:

1. Oversee the regular operations and maintenance of public drinking water and wastewater systems and provide recommendations for improvements.
2. Development and implementation of operational monitoring programs.

Through the two (2) departments; five (5) towns and seven (7) Local Service Districts have been identified to participate in the project. These 12 communities are located in three (3) clusters in Central Newfoundland.

This is a 3 year pilot program ending March 31st, 2019.

6. Contribution to the Provincial Waste Management Strategy

In 2016, CRSB has contributed to the Provincial Waste Management Strategy in the diversion of waste going to the landfill. With the total tonnage brought through the CRSB operations of 49,865 tonnes and diversions of 9928 tonnes, diversion rate is 19.9%.

Diversion Types and Quantities 2016

Types of Waste	Tonnes
Blue Bag	2820
Construction & Demolition	4703
Cardboard	1370
E-Waste	82
HHW	15
Metals	930
Wood	8
TOTAL TONNAGE	9928

CRSB continues to strive towards greater diversions rate. The next step will come with the introduction of composting.

7. Future Plans of CRSB

7.1 West Coast & Peninsulas Waste

CRSB looks forward to the Regional Service Boards from West Coast and Peninsulas (Northern Peninsula, Baie Verte/Green Bay, and Coast of Bays) bringing their waste to Central Newfoundland. With the opportunity of doubling the amount of waste, CRSB can maximize its efficiency of operation, and stabilize the economics of waste management for Central, Western, and the Peninsulas. Economy brings efficiencies, and everyone benefits.

7.2 Composting

CRSB is waiting for the positive decision on the composting facility. With this opportunity, Central and West can achieve the diversion rate of 50% as outlined in the Provincial Waste Management Strategy.

7.3 Development of CRSB Industrial Area

In 2016, CRSB partnered with the Multi – Material Stewardship Board to develop a 10 acre laydown yard. This area comes with fire protection (3 fire hydrants) and temporary office space with electrical. The site is presently being used for a tire laydown yard. Future plan will include the development of an additional 10 acre.

CRSB will continue to look for partners to develop the other 30 acre at this location.

7.4 Wood Shredding Potentials

CRSB had in 2016, gone out with a tender to purchase a horizontal shredder to process the wood fiber located at the Regional Waste Management Site and seven (7) Transfer Stations. With interest shown from a contractor, CRSB will in 2017 go out with an Expression of Interest for Wood Fiber Processing.

7.5 Solutions for Septic Waste

CRSB is looking forward to working with the various Provincial Dept. and private enterprise to find a resolution to the challenges of residential & commercial septic waste. CRSB went out with a RFP for septic waste. Two bidders responded but to date no private sector company has been willing to commit to funding the project with the uncertainty of the volumes in Central Newfoundland.

8.0 CRSB 2016 Audited Financial Statement
Appendix –D – Audited Financial Statement

8.1 Appendices

- A Legislative Mandate
- B Governance Model, (Revised January 2017)
- C Tipping Fees, 2016
- D 2016 Audited Financial Statement