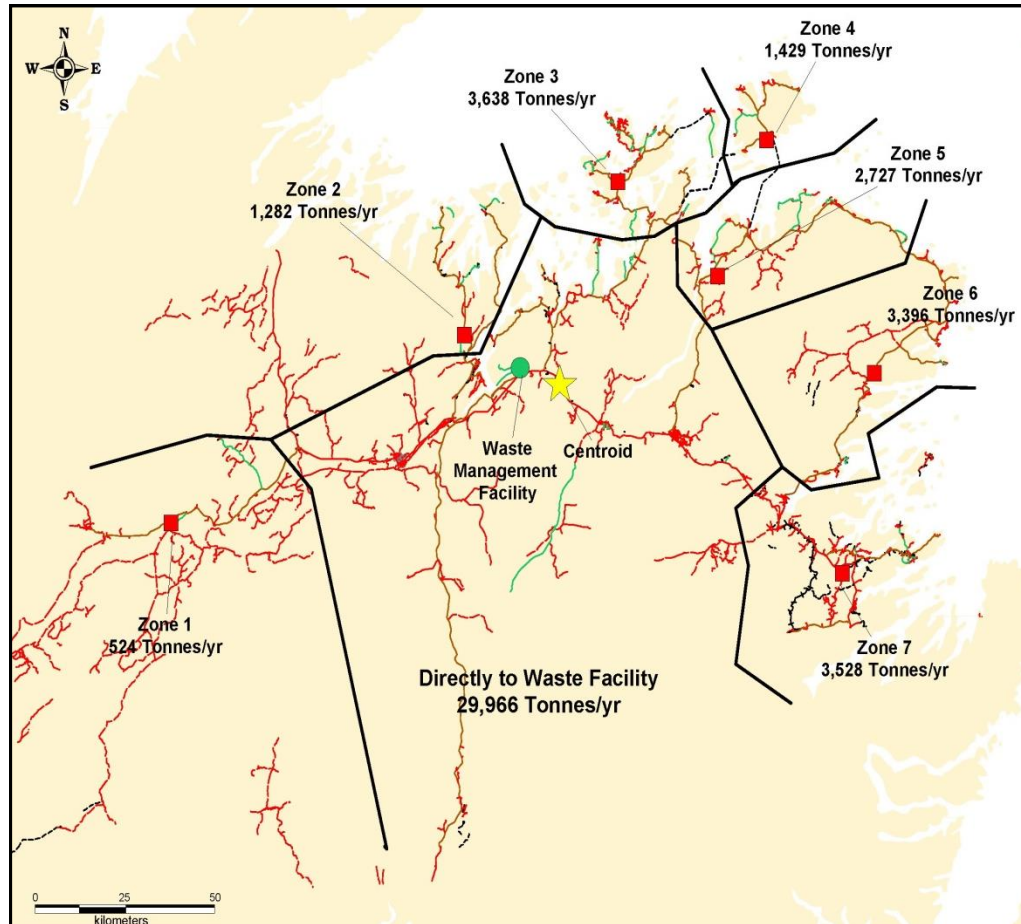


Central Regional Service Board

2018 Annual Report



Prepared By: Edward Evans
CAO-CRSB

Date: June 30th, 2019



Central Newfoundland Waste Management

P. O. Box 254, Norris Arm, NL, A0G 3M0

Phone: 709 653 2900

Fax :709 653 2920

Web: www.cnwmc.com E-mail: Info@cnwmc.com

July 11, 2019

Minister of Municipal Affairs & Environment

4th Floor, West Block

Po Box 8700

St. Johns, NL A1B 4J6

Dear Minister Dempster;

On behalf of the Board of Directors of the Central Regional Service board, I am pleased to present the 2018 Annual Report as required under the Provincial Regional Service Boards Act 2012. (Revised 2015)

This report will give an overview of the Central Regional Service Board and its contribution to the Provincial Waste Management Strategy. It will identify its business units, staffing levels, and expansion of operations in 2017.

Attached you will also find the CRSB Governance Model (revised January 2017), Appendix A and a copy of the 2018 Financial Statements, Appendix C.

Should you have any questions or concerns, please feel free to contact our CRSB office.

Sincerely,

Robert Elliott

Chairperson, CRSB

Table of Contents

Central Regional Service Board (CRSB) and Central Newfoundland Waste Management

(CNWM)- Board & Boundaries	1
CRSB 2016 Board Members	2
The Regional Waste Management Site	3-10
CRSB Business Units	11
Material Recovery Facility (MRF) 16	12-
CRSB Curb Side Collection Program	17
CRSB Water/Waste Water Pilot Project	17
Enforcement Office	18
Contribution to the Provincial Waste Management Strategy	18
Future Plans of CRSB	19
Appendices	20

1. The Central Regional Service Board (the Board) was established in 2008 and is governed under the Provincial *Regional Service Boards Act* 2012, revised 2015. The Board's power includes the construction and operation of the regional Solid Waste disposal site and seven local Waste Management Facilities. It is empowered to set and charge user fees to municipal authorities, local service districts, unincorporated areas, benefited by a regional facility and other entities as required.
2. Prior to 2008, the entity operated as Central Newfoundland Waste Management (CNWM). It continues to operate under the business name of CNWM, as it identifies the service we provide and is recognized by the communities and customers we serve in the central region. All legal documents are signed under the name of Central Regional Service Board.

Central Regional Service Board boundaries, as established under the Regional Service Board Act 2012, revised 2015, are from Terra Nova National Park (park included) in the East, Buchans in the West and Fogo Island/Twillingate in the North.

Board Boundaries

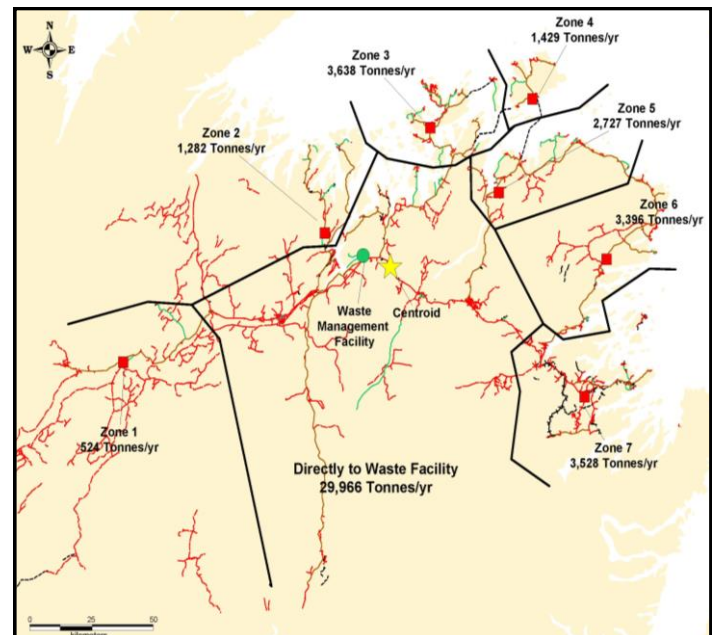
Regional Site

Route 3-1-09

Norris Arm North Access Road

Ward 1 -Buchans Area
 Ward 2 -Point Leamington Area
 Ward 3 -New World Island/Twillingate
 Ward 4 -Fogo Island
 Ward 5 -Gander Bay
 Ward 6 -Indian Bay
 Ward 7 -Terra Nova
 Ward 8 -Gander
 Ward 9 – Grand Falls Windsor
 Ward 10-Bishops Falls, Botwood & Lewisporte
 Ward 11-Norris Arm North & South
 Ward 12-Direct Haul

The total population served by CRSB is approximately 32,200 households with 72,500 residents and approximately 3,000 businesses.



The Central Regional Service Board's Office is located at the Regional site, on Route 3-01-09, which is the Norris Arm North Access Road. Staffing levels have reached forty-two (42)

full time positions; six (6) at the Administration Building, eleven (11) at the Regional Site, seven (7) at the Local Waste Management Sites, ten (10) Collection Drivers, and eight (8) part time/call-ins.

Contact information: Phone: 709 653-2900; Fax: 709 653-2920; Email: info@cnwmc.com

The Board shall meet no fewer than 6 times a year for the disposition of general business. Special board meetings may be called by the Chairperson, or on the written request of four members.

3. The Board's Governance Model delineates the number of members and representation of towns and zones within the board's geographic boundaries. As per the Governance Model a full board includes, twelve Board members (Chair included).

(Appendix A – Governance Model). Revised January 2017.

The 2018 Board members are as follows:

Name	Ward Represented
Mr. Gary Nofle	Buchan's Junction (Ward 1)
Mr. Robert Elliott, Chairperson	Point Leamington (Ward 2)
Mr. Kevin Butt	New World Island/Twillington (Ward 3)
Mr. Wayne Collins	Fogo Island (Ward 4)
Mr. Keith Howell	Gander Bay (Ward 5)
Mr. Lloyd Pickett	New-Wes-Valley/Indian Bay (Ward 6)
Mr. Glenn Arnold – Vice Chair	Terra Nova Area (Ward 7)
Mr. Percy Farwell -Secretary	Gander (Ward 8)
Mr. Darrin Finn	Grand Falls Windsor (Ward 9)
Mr. Perry Pond	Bishops Falls/Botwood/Lewisporte (Ward 10)
Mr. Ross Rowsell	Norris Arm North & South (Ward 11)
Mr. Derrick Luff - Treasurer	Centroid (Ward 12)

The Board oversees the continued construction and operation of the Central regional site at Norris Arm North access road and 7 local waste management facilities (transfer stations). As

well, the Board continues, through its Management Staff, to monitor the day to day operations of these sites.

4.0 The Regional Waste Management Site includes the following facilities:

4.1 Administration Building



The Administration building has a staff of six to oversee the Central Regional Waste Management System, and an office to accommodate the water/waste water specialist, and enforcement officer. The building also includes a training room which can accommodate school tours or groups that request a tour of the Regional Waste Management Facility.

4.2 Scale House and Scale



The Scale house has an automated system that allows all customers entering the site to use radio frequency identifying cards which identifies the customer, processes their information, and automatically send invoices to the customer.

4.3 Public Drop Off Area

Public Drop Off Area allows residents to bring their sorted waste to the appropriate bins. It also houses drop off locations for e-waste, paint waste, residential HHW, metals, tires, etc. This site is operational 6 days a week. (Monday – Saturday).



Metal Laydown Area



Product Care Paint Waste Storage



4.4 2nd generation lined landfill with full leachate control system.



4.5 Leachate Control Building and Lagoons



This is the only 2nd generation lined landfill with full leachate treatment control in the Province. The system has liners in the ground which collects all leachate and directs it to a leachate treatment process. This operation treats the leachate before it is released to the environment. Leachate monitoring tests are reported monthly.

4.6 Maintenance Garage.



CRSB has three (3) mechanics on site and does the majority of its maintenance on its fleet of landfill equipment, trucks and trailers.

4.7 Construction /Demolition laydown area and burial site.



Materials that are identified in the “Certificate of Approval” (CAO) by the Dept. of Municipal Affairs & Environment as inert (causing no damage to our environment) are permitted to be lodged in the Construction and Demolition (C & D) laydown area. Materials that have future uses are kept for processing or sale. The materials that have no future uses can be buried in the C & D landfill site. Materials such as wood fibre will be considered for a re-use. Materials such as shingles, glass, non – program tires (MMSB), gyprock etc. will be buried in the C & D laydown area. Adjacent to the C & D site is an approved burial site for asbestos waste.

4.8 The Material Recovery Facility (MRF).



The Material Recovery Facility went into operation in March, 2015. Its operating under a contract with Herbert's Recycling Inc. and process in excess of 3800 tons of waste annually.

4.9 Typical Transfer Station



The seven (7) Transfer Stations provide a similar level of service to its sub- regions within the Central Region. The locations selected included the fact that no community had more than 100 km or one hour drive to dispose of its waste, and that no matter where you lived, everyone pays the same fees for services

List of Transfer Stations:

- Buchans Junction
- Point Leamington
- Gander Bay
- NWI/Twillingate
- Fogo Island
- Indian Bay
- Terra Nova

5. Business Units**5.1 Waste Disposal**

In 2018, CRSB handled 51,180 tonnes of waste at the Regional Waste Management Site, seven (7) Transfer Station Sites, and Western Regional Waste Management. Below is a list of product types & tonnage for each of the waste streams.

Types and Quantities of Waste Received in 2018:

1. Clear Garbage Bags.....	23,571 Tonnes
2. Clear Garbage Bag (WRSB).....	6444 Tonnes
3. Transparent Blue Bags.....	2,590 Tonnes
4. Transparent Blue Bags (WRSB).....	832 Tonnes
5. Construction/Demolition/Bulk (Sorted).....	7,144 Tonnes
6. Construction/Demolition/Bulk (Mixed).....	8,373 Tonnes
7. Wood Products.....	2 Tonnes
8. Metals	918 Tonnes
9. Cardboard.....	1,101 Tonnes
10. Household Hazardous Waste (HHW).....	18 Tonnes
11. E-Waste.....	44 Tonnes
12. Tires.....	151 Tonnes
Total Tonnage.....	51,180 Tonnes

5.2 Landfill Cell #2

In 2016, Central Regional Service Board, with the assistance of the Dept. of Municipal Affairs and Environment, constructed a 2nd lined landfill cell attached to the existing cell for continued leachate treatment. Since 2018, this new cell handles disposal of waste from both Central & Western Regional Service Boards.



5.3 Material Recovery Facility Operation

By December of 2018, The Material Recovery Facility (MRF) had seen 44 months of operations.

Attachment MRF No. 1 shows the monthly tonnage of blue bag and cardboard received at the MRF for 2017 and 2018.

The blue bag tonnage dropped by 72 tonnes and the cardboard increased by 28.96 tonnes. Total tonnage for the MRF dropped by 58 tonnes.

MRF Operations



Date: 2018	Blue Bag	Cardboard	Total	WRSB Blue Bag
January	231.13	89.91	321.04	
February	173.08	75.54	248.62	

March	195.60	87.28	282.88	
April	217.13	83.21	300.39	
May	222.65	95.88	318.53	
June	213.43	186.49	299.92	
July	216.58	82.43	299.00	
August	290.21	102.01	392.22	58.93
September	337.03	91.00	428.03	125.04
October	425.39	84.41	509.86	196.39
November	442.76	118.46	561.22	228.29
December	456.65	100.74	557.39	223.45
Total	3421.64	1197.37	4519.10	832.10
	(-72T)	(+28.96T)		

ATTACHMENT MRF NO. 1 Material Recovery Facility Tonnage in – 2017

TOTAL	2,821.60	1,365.97	4,187.57	

Date: 2017	Blue Bag:	Cardboard:	Total:	
January	229.48	98.70	328.18	
February	196.88	79.22	276.14	
March	220.94	93.93	314.87	
April	199.07	100.02	299.09	
May	254.84	117.90	372.74	
June	243.29	103.69	346.98	
July	208.10	95.70	303.80	
August	243.74	111.86	355.60	
Sept	231.14	96.86	328.00	
October	205.71	96.70	302.41	
November	220.64	81.57	302.21	
December	208.33	92.26	300.59	
TOTAL	2662.16	1168.41	3830.57	

In 2018 CNWM (through Hebert's Recycling Inc.) shipped out the following products:

1.	Cardboard	1,333.63 Tonnes
2.	Mixed Paper	1,471.67 Tonnes

3.	PET (small plastics)	134.38 Tonnes
4.	HDPE (large plastics)	94.96 Tonnes
5.	Mixed Tubs/Lids	45.93 Tonnes
6.	Aluminum	33.59 Tonnes
7.	Tin	239.39 Tonnes
8.	Poly C Milk/Tetra Packaging	86.99 Tonnes
	Total shipped in 2018	3440.54 Tonnes

What happens to the recycled materials from the MRF?

1. **Cardboard:** Sent to paper mills and into repulper. A fiber mat is created. Used to make new cardboard boxes, cereal boxes, gift boxes, tubes & core board for paper towels etc.
2. **Mixed Paper:** Sent to a paper mill, the recovered fiber is refined and cleaned. Used to make recycled paper, covers for hard cover books, game boards and cereal boxes etc.
3. **PLASTIC- Polyethylene Terephthalate (PET):**
Sent to Canadian Companies to be flaked and rolled into sheets of plastic. Used for organic egg cartons, take out containers & cartons.
4. **PLASTIC- High Density Polyethylene- (HDPE):**
Sent to Canadian Companies for processing, used to make drainage pipes for disposal fields.
5. **Mixed tubs and lids, same as (PET).**
6. **Aluminum:** Sent to the U.S. It is shredded, melted, and rolled into sheets, can be used to make new aluminum cans, plates, siding, etc.
7. **Tin:** Sent out through Newco Metals (NL), moved to markets in North America, used to make tin/steel products – tin cans, appliances, automobiles, rebar, pipe, etc.
8. **Poly C milk/tetra and gable:**

Sent to National and International markets, used to make new cereal boxes, boxboard, corrugated cardboard etc.

5.4 Curb Side Collection Program

CRSB has eleven (11) modern split stream collection trucks. The split Stream Truck allows for a single pass at curbside to collect both the blue recycling bag and clear garbage bag.

In 2018, the collection process included 82 communities/17,950 households.



5.5 Water/Waste Water Pilot Project

CRSB has partnered with The Department of Municipal Affairs and Environment to:

1. Oversee the regular operations and maintenance of public drinking water and waste/water systems and provide recommendations for improvements.
2. Development and implementation of operational monitoring programs.

Through the Province; ten (10) towns and seven (7) Local Service Districts have been identified to participate in the project. These 17 communities are located in six (6) clusters in Central Newfoundland. Only four (4) now remain on boil order.

This is a 5 year pilot program ending March 31st, 2021.



5.6 Enforcement Officer

- October 15, 2018 – October 2019
- 1 year contract

3 Key areas of review and enforcement:

1. Illegal Dumping: Equipment purchased & tested.

2. Education & Enforcement: Sort It Central – Recycling and Garbage Program – Curbside Collection Program.
3. Education & Enforcement: Sort It Central – Recycling and Garbage Program – Commercial.

By Fall of 2019, CRSB will have a template put in place to consider the employment of an enforcement or compliance officer for all to utilize.

6. Contribution to the Provincial Waste Management Strategy

In 2018, CRSB continued to contribute to the Provincial Waste Management Strategy in the diversion of waste going to the landfill. **Diversion Types and Quantities 2018**

Types of Waste	Tonnes
Blue Bag	2590
Construction & Demolition (sorted)	4702
Cardboard	1101
E-Waste	44
HHW	18
Metals	918
Wood	4
Paint Waste	22
TOTAL TONNAGE	9399

CRSB continues to strive towards greater diversions rate. The next step will come with the introduction of composting.

7. Future Plans of CRSB

7.1 WRSB

- **Blue Bag recycling in Central.** CRSB processed 832 tonnes of Blue Bag Recyclables. It was hoped that both Central and Western would utilize the existing Material Recovery Facility (MRF) located in Central, NL.

- **Disposal services in Central.** CRSB provided disposal services for 6,444 tonnes into its 2nd generation lined landfill for WRSB. This step provided access to 75,000 additional people to participate in a Modern Waste Management System. Both Central & Western continue to strive to move into a long term contract for Future Waste Management Services.

7.2. Coast of Bays (COB), Baie Verte/Green Bay (BVGB) Regional Service Boards

CRSB continues to net-work with the Peninsulas to help move them closer to participating in a Modern Waste Management System.

7.3 Wood Fiber Processing

CRSB hopes to work with all Regional Service Boards and The Department of Municipal Affairs & Environment to find a resolution to the re-use of wood fiber in the province, as opposed to the disposal of this valuable product.

7.4 Composting

CRSB is waiting for a positive decision on composting. With this opportunity, Central can achieve the diversion rate of 50% as identified in The Regional Waste Management Strategy.

8.0 Appendices

- 8.1 CRSB Governance Model (Revised January 2017)
- 8.2 CRSB Audited Financial Statements 2018

